



PLATEAU  
KIT  
FROM

# PLATEAU 67

## \$POA

BLN 7940C

Residential + Rural Steel Frame Buildings

66.6 m<sup>2</sup>

### Affordable Living Collection Granny Flats

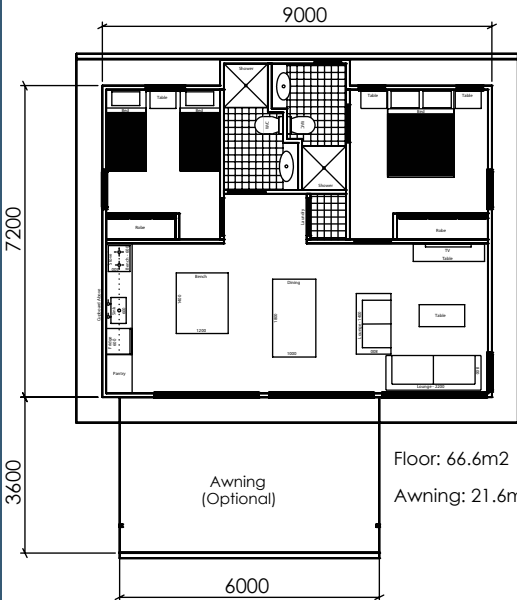
Also Available:  
40m<sup>2</sup> & 56m<sup>2</sup>

#### Standard Inclusions:

- Delivery included within 300k Newcastle NSW
- ALL Glass to schedule
- COLORBOND® Steel Roof in your selection of colour
- COLORBOND® Steel flashings and gutters
- COLORBOND® Steel Fascia on "Summit" and "Plateau"
- COLORBOND® Steel Wall Cladding / Fibre Cement Plank
- Eaves (fully lined on Summit and Plateau)
- Kingspan Insulbreak65 insulation to roof and walls
- Engineers certified building plans for your submission to council
- Bluescope Steel warranties (conditional)



PLATEAU 67



#### Window Schedule:

2110H x 2415W Glass Sliding Door (Clear Glass)	2
910H x 2415W Sliding Window (Clear Glass)	1
910H x 915W Awning Window (Clear Glass)	1
2110H x 615W Double Hung Window (Clear Glass)	2
610H x 615W Awning Window (OBS Glass)	1
2110H x 915W Double Hung Window (Clear Glass)	3

#### Why buy an AllGal Kit ?

They include more "options" as standard:

- Quality Glass - Aluminium
- Standard Flyscreens
- Standard Fly Doors
- Assembled Wall Frames
- Standard Freight
- Insulation
- Ceiling Batten

AllGal is a fully licenced builder

PRICES & SPECIFICATIONS SUBJECT TO CHANGE WITHOUT NOTIFICATION

Head Office : 111 Enterprise Drive Tomago Phone (02) 4964 8599 Fax (02) 4964 8864

RAYMOND TERRACE  
2364 Pacific H'wy  
Raymond Terrace  
NSW 2324

LISMORE  
94 Bruxner H'wy  
Loftville via Lismore  
NSW 2480

BRANXTON  
93 Maitland Street  
Branxton  
NSW 2335

GOSFORD  
4 Luke Close  
West Gosford  
NSW 2250



Residential + Rural Steel Frame Buildings

P:49831922

P:6622 2540

P:4938 3088

P:4923 4266

heatherbrae@allgal.com.au

lismore@allgal.com.au

branxton@allgal.com.au

gosford@allgal.com.au

"If its AllGal, its all good"

sales@allgal.com.au

www.allgal.com.au



# SUMMIT 67 CREST 67

BLN 7940C

Residential + Rural Steel Frame Buildings

66.6 m<sup>2</sup>



SUMMIT 67



CREST 67



PRICES & SPECIFICATIONS SUBJECT TO CHANGE WITHOUT NOTIFICATION

Head Office : 111 Enterprise Drive Tomago Phone (02) 4964 8599 Fax (02) 4964 8864

**RAYMOND TERRACE**  
2364 Pacific H'wy  
Raymond Terrace  
NSW 2324

**P:49831922**

heatherbrae@allgal.com.au

**LISMORE**  
94 Bruxner H'wy  
Loftville via Lismore  
NSW 2480

**P:6622 2540**

lismore@allgal.com.au

**BRANXTON**  
93 Maitland Street  
Branxton  
NSW 2335

**P:4938 3088**

branxton@allgal.com.au

**GOSFORD**  
4 Luke Close  
West Gosford  
NSW 2250

**P:4923 4266**

gosford@allgal.com.au



**"If its AllGal, its all good"**

sales@allgal.com.au

www.allgal.com.au