



BLN 7940C

Residential & Rural Steel Frame Buildings



"HIGHLINE OFFSET CURVED ROOF"

AS Displayed

BUILDING SIZE: 6.0 x 7.2 x 5.857 + 1.8m deck

Pre-fabricated 90mm High Tensile steel wall frames

Upper flooring system C200 bearers and Joists

Inclusions:

Two Colorbond® steel Roller Doors 2.030h x 2.440w

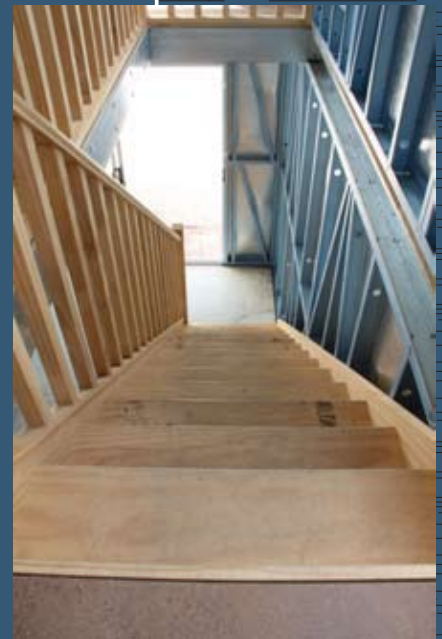
Windows - 2 / 1809 upper floor, 1 / 1809 lower floor

2 / SD2121,1 upper and lower

Colorbond® steel gutters and downpipes

Pine staircase with one handrail and opening rail

Deck - 6.0 x 1.8 with roof over



allgal.com.au
sales@allgal.com.au

BRING YOUR FLOOR PLAN SKETCH TO OUR OFFICE/DISPLAY CENTRE AND RECEIVE A FIRM QUOTE

Head Office : 111 Enterprise Drive Tomago Phone (02) 4964 8599 Fax (02) 4964 8864

RAYMOND TERRACE
2364 Pacific H'wy
Raymond Terrace
NSW 2324

LISMORE
94 Bruxner H'wy
Lismore
NSW 2480

BRANXTON
93 Maitland Road
Branxton
NSW 2335

GOSFORD
4 Luke Close
West Gosford
NSW 2250

Phone (02)
49831922

Phone (02)
6622 2540

Phone (02)
4938 3088

Phone (02)
4323 4266

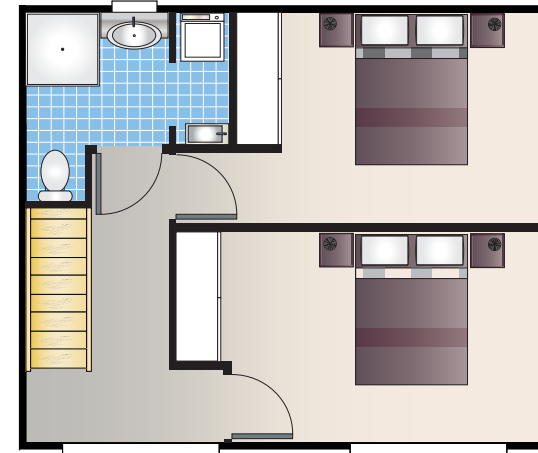
heatherbrae@allgal.com.au lismore@allgal.com.au branxton@allgal.com.au gosford@allgal.com.au



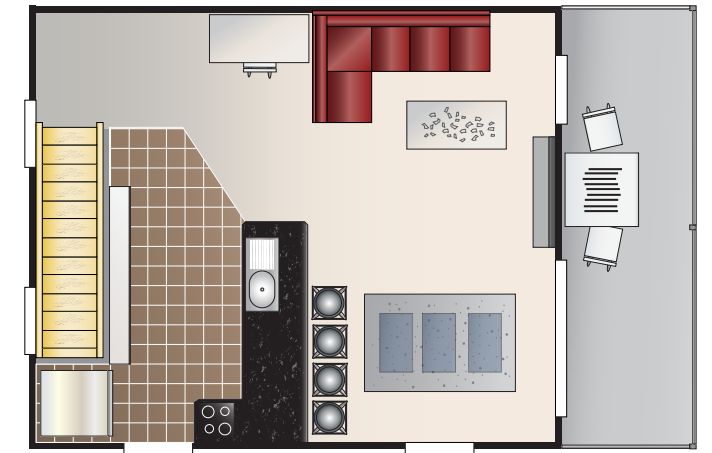
BLN 7940C

Residential & Rural Steel Frame Buildings

Option (A) Internal Wall Add On 2 Bedrooms on Ground Floor - 6x7.2 Building



Ground Floor



1st Floor

OPTIONS AVAILABLE

Extension Bay 3.6 x 6.0

Lower Floor Height 2.7m (For 4WD Access)

Personal Access Door – Roller Doors – Motors

Glass Doors & Windows – Flyscreens – Barrier Screens – Tinted Glass

Insulation – Wall Claddings

Handrail to Stairwell

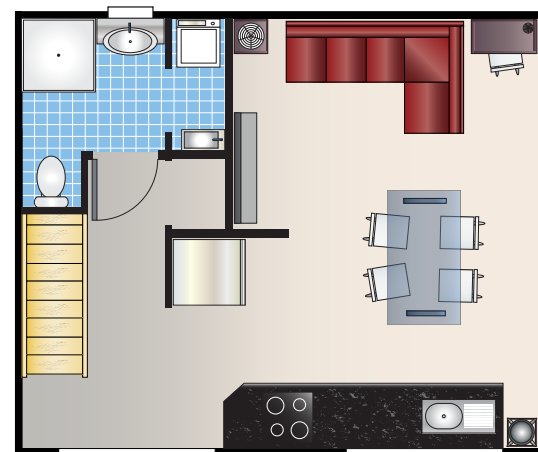
Decks (Cement Sheet) – Hand Rails

Additional Walls

Carports – Awnings



Option (B) Internal Wall Add On 2 Bedrooms on Upper Floor - 6x7.2 Building



Ground Floor



1st Floor

Head Office : 111 Enterprise Drive Tomago Phone (02) 4964 8599 Fax (02) 4964 8864

RAYMOND TERRACE
2364 Pacific H'wy
Raymond Terrace
NSW 2324

LISMORE
94 Bruxner H'wy
Lismore
NSW 2480

BRANXTON
93 maitland Road
Branxton
NSW 2335

GOSFORD
4 Luke Close
West Gosford
NSW 2250

Phone (02)
49831922

Phone (02)
6622 2540

Phone (02)
4938 3088

Phone (02)
4323 4266

heatherbrae@allgal.com.au lismore@allgal.com.au branxton@allgal.com.au gosford@allgal.com.au



sales@allgal.com.au
allgal.com.au