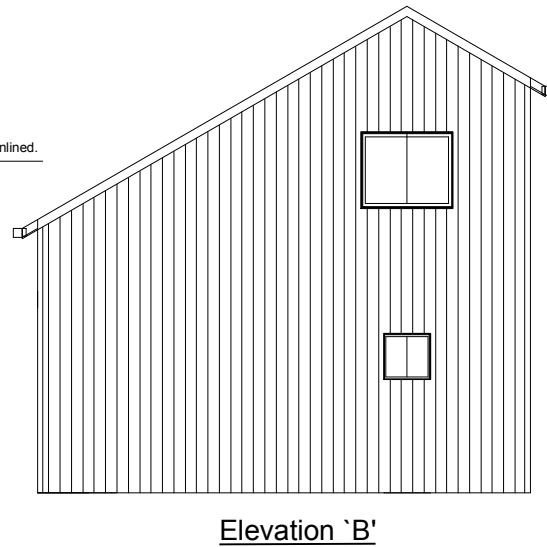
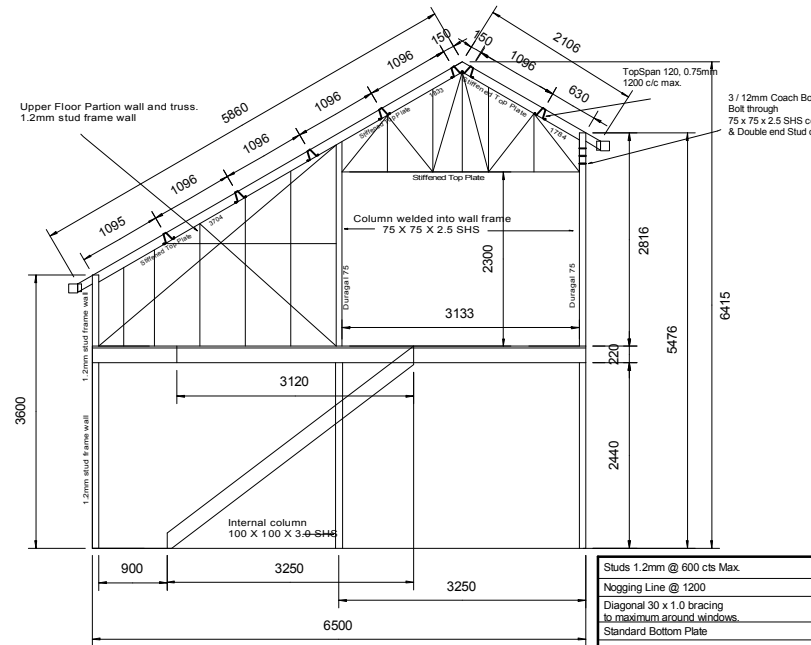


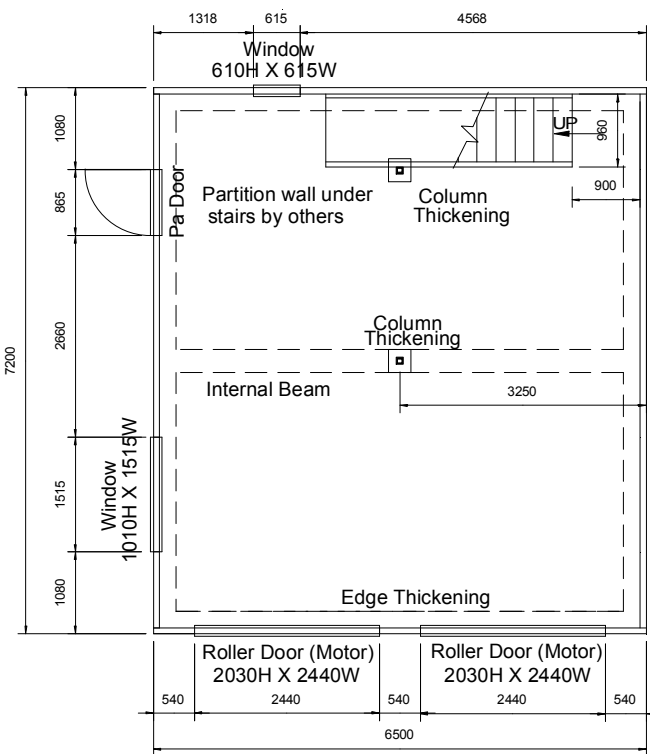
Elevation 'A'



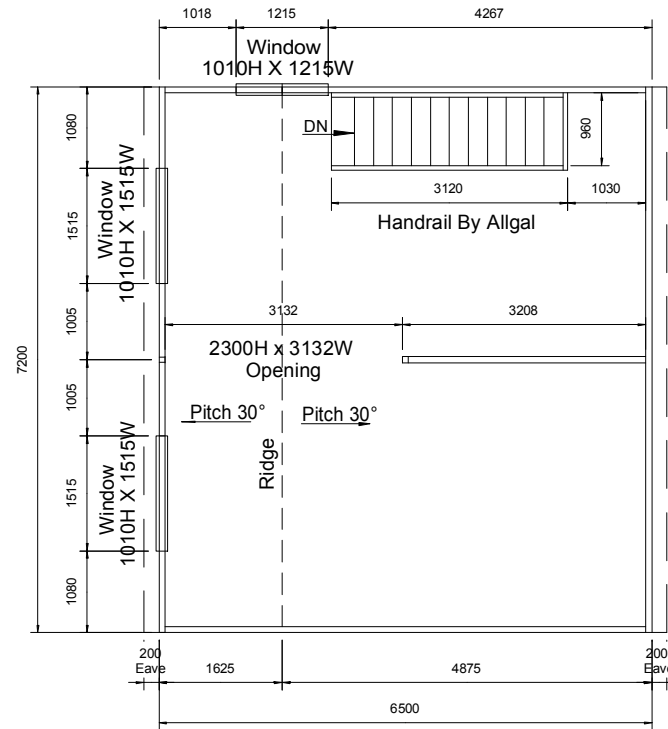
Elevation 'B'



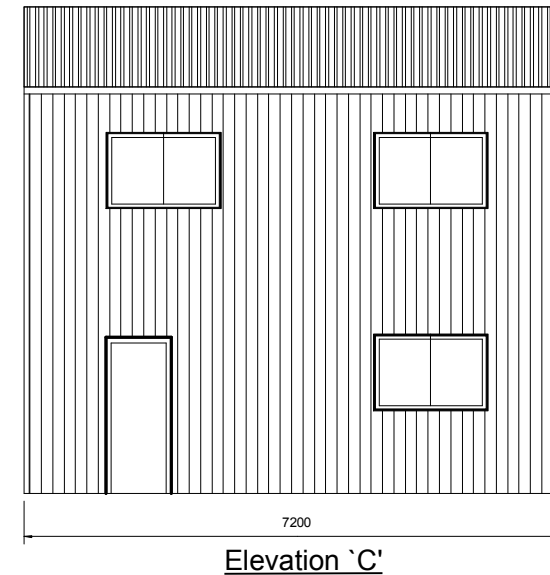
Section through Elevation 'B'



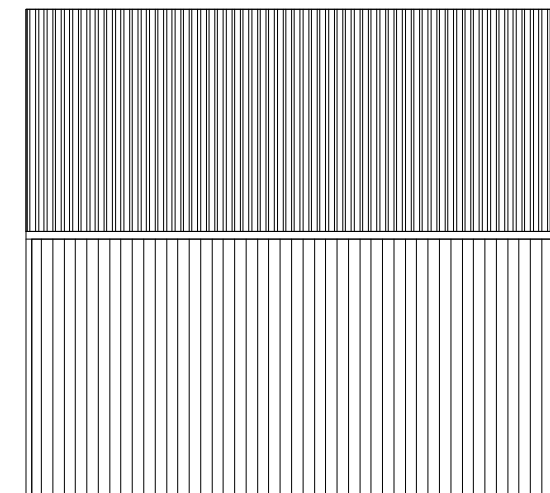
Ground Floor Plan



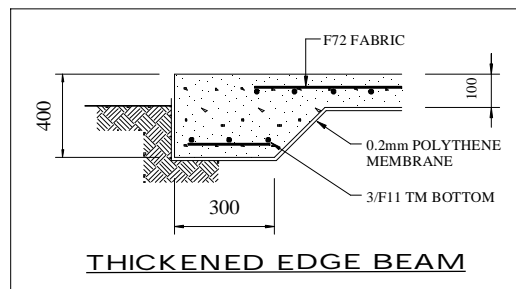
Upper Floor Plan



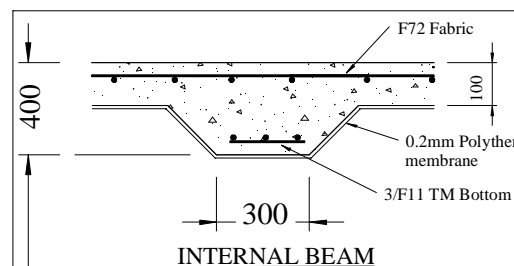
Elevation 'C'



Elevation 'D'



THICKENED EDGE BEAM



INTERNAL BEAM

GENERAL NOTES

ALL WORKS TO BE IN ACCORDANCE WITH THE SPECIFICATIONS AND REQUIREMENTS OF THE LOCAL AUTHORITIES

ALL EXCAVATIONS AND REINFORCEMENTS TO BE INSPECTED BY THE ENGINEER PRIOR TO THE POURING OF CONCRETE

LOCATION OF THE BUILDING TO BE CONFIRMED ON SITE.

THESE DRAWINGS ARE NOT TO BE SCALED IF IN DOUBT ASK.

SPECIFIC NOTES:

ROOF CLADDING TO BE 0.42 BMT TRIMDECK - C/BOND ALL ROOF CLADDING AND RAINWATER GOODS FIXED IN ACCORDANCE WITH MANUFACTURERS RECOMMENDATIONS.

WALL CLADDING TO BE 0.35 BMT TRIMWALL - C/BOND ALL WALL CLADDING FIXED IN ACCORDANCE WITH MANUFACTURERS RECOMMENDATIONS.

STUD FRAME WALLS TO BE MANUFACTURED & FIXED IN ACCORDANCE WITH AS 4055

INTERNAL COLUMNS = 100 x 100 x 3.0 SHS
1st FLOOR = C20019, C20015, C20012
ROOF PURLINS = TS120

SOIL ASSUMED 'M' CLASS

CONCRETE SLAB: 100mm THICK WITH F72 FABRIC 25mm TOP COVER, ON APPROVED DAMPROOF MEMBRANE & MINIMUM 50mm SAND BINDING LAYER.

COLUMN THICKENING: 300mm SQUARE x 450mm DEEP POURED INTEGRALLY WITH SLAB ON GROUND, F72 FABRIC, 50mm BOTTOM COVER.

EDGE THICKENING: 300mm WIDE x 400mm DEEP POURED INTEGRALLY WITH SLAB ON GROUND, 3/F11 TM, 50mm BOTTOM COVER.

CONCRETE MINIMUM COMPRESSIVE STRENGTH 20mPa AT 28 DAYS

WINDLOADS HAVE BEEN ASSESSED IN ACCORDANCE WITH A.S. 1170.2-1993

CLASSIFICATION

N2

Roof & Wall Cladding

*Note. The above cladding profile is called CUSTOMORB &/or WALLCLAD

*Note. The above cladding profile is called TRIMDECK &/or TRIMWALL.



<p>AlGal Residential + Rural Steel Frame Buildings BLN 7940C</p>							<p>JOB DETAILS</p>		<p>JOB REFERENCE</p>	
<p>HEAD OFFICE PHONE 02 49648599</p>	<p>HEAD OFFICE FAX 02 49648864</p>	<p>DRAWN LH</p>	<p>DATE DRAWN</p>	<p>DWG FILE JN443</p>	<p>SCALE 1:100</p>	<p>REV. 0</p>	<p>DRAWING No. 1 OF 2</p>	<p>JN443</p>		