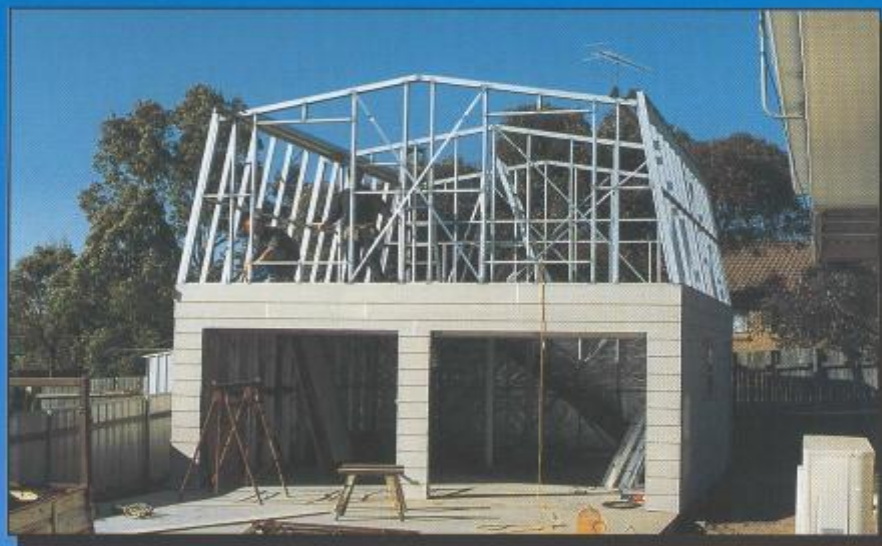
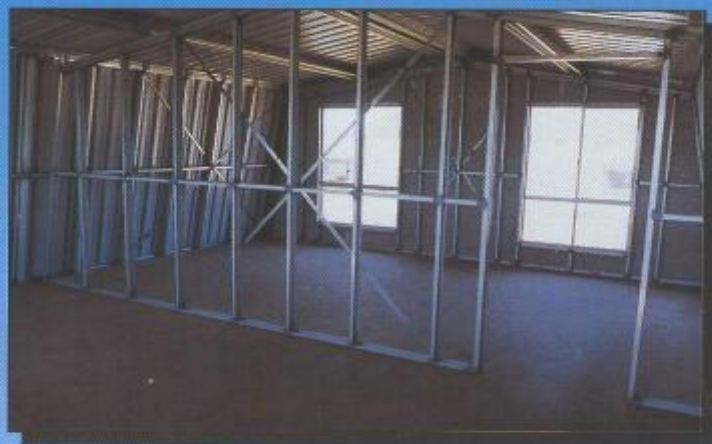


Options to Consider...

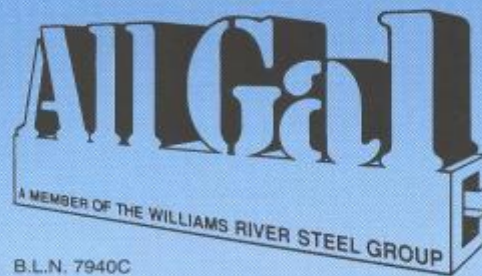


- **Zincalume Roof** – still the durability of steel, with economics in mind.
- **Alternative Claddings** – may be selected for those looking for something unique, here's some suggestions: Western red cedar, Hardiprime or any cladding suitable for 600mm stud centres.
- **Extra Windows** – to your requirements, toilet windows fitted with permanent vent and obscure glass, or something to enjoy the panoramic view, we'll help if we can.

- **Personnel Access Door** – of the standard you would expect from the Williams River Steel Group.
- **Internal Walls** – for the toilet or shower or maybe an extra partition, available with cavity sliders if required or pre-hung internal doors are no problem.
- **Glass Sliding Doors** – may be more to your needs.
- **Insulation to Roof** – R1.25 50mm insulation blanket is standard.
- **Sisalation to Walls** – supplied in anti-glare to save the sunburn.
- **Concrete Slab** – to the highest quality of finish, 100mm thick including a 400 x 300mm edgebeam complete with 11mm trenchmesh, F72 fabric and footing for supporting columns.
- **Erection** – by our tradesman of the finest calibre.
- **Verandahs or Attached Carport** – to your size requirements.



This building is only one of many available in our range of flexible designs, talk to the men of steel about your requirements, at AllGal Garages.



ABN 17 002 968 934

B.L.N. 7940C

HEAD OFFICE: 111 Enterprise Drive Tomago **PHONE (02) 4964 8599** **FAX (02) 4964 8864**

RAYMOND TERRACE

291 Pacific H'wy
Raymond Terrace
NSW 2324

Phone (02)

4983 1922

Fax (02) 4964 8864

COFFS HARBOUR

4 Keona Circuit
Coffs Harbour
NSW 2450

Phone (02)

6651 7223

Fax (02) 6651 7224

TAMWORTH

48 Dampier St
Tamworth
NSW 2340

Phone (02)

6762 1760

Fax (02) 6762 1764

LISMORE

94 Bruxner H'way
Lismore
NSW 2480

Phone (02)

6622 2540

Fax (02) 6622 1720

GOSFORD

Luke Close
Gosford West
NSW 2250

Phone (02)

4323 4266

Fax (02) 4323 4788

BRANXTON

93 Maitland Road
Branxton
NSW 2335

Phone (02)

4938 3088

Fax (02) 4938 3244