



Residential + Rural Steel Frame Buildings

**HEATHERBRAE**  
 Unit 5 2364  
 Pacific Highway,  
 Heatherbrae 2324  
 Ph. (02) 4983 1922  
 Fax. (02) 4987 4545

**BRANXTON**  
 New England Highway,  
 Branxton 2335  
 Ph. (02) 4938 3088  
 Fax. (02) 49383244

**GOSFORD**  
 4 Luke Close,  
 Gosford West 2250  
 Ph. (02) 4323 4266  
 Fax. (02) 4323 4788

**COFFS HARBOUR**  
 Pacific Highway,  
 Coffs Harbour 2450  
 Ph. (02) 6651 7373  
 Fax. (02) 6651 7858

**LISMORE**  
 94 Bruxner Highway,  
 Lismore 2480  
 Ph. (02) 6622 2540  
 Fax. (02) 6622 1720

**HEAD OFFICE:**

111 Enterprise Drive,  
 Tomago 2322  
 Ph. (02) 4964 8599  
 Fax. (02) 4964 8864  
 Email. allgal@wrsteel.com.au  
 Web. www.allgal.com.au

**" THE HIGHLANDER "**

**SECIFIC NOTES:**

**ROOF CLADDING**  
 - COLORBOND®  
 - TRIMDECK® ROOF  
 & UPPER MANSARD WALLS

**HORIZONTAL WALL CLADDING.**  
 - PRIMAPLANK - SMOOTH®  
 - N2 (W33) / N3 (W41)

**STUDFRAME WALLS**  
 - 80 Deg Pitch Upper Mansard Walls  
 - 2.440m or 2.700 Lower walls

**INCLUSIONS**

**ROLLER DOORS STANDARD**

Garages with a 2.440m Lower floor Hight  
 have 2 @ 2.030mh x 2.440mw R/Doors

Garages with a 2.700m Lower floor Hight  
 have 2 @ 2.330mh x 2.440mw R/Doors

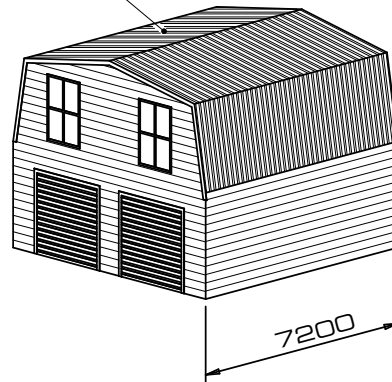
**WINDOWS**

All Kits are standard with  
 2 @ 1810h x 1215w Windows

**STAIRS.**

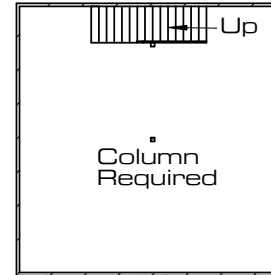
All Kits are standard with  
 a Treated Pine staircase and rail.  
 Handrail for stairs well,  
 is NOT INCLUDED.  
 This is an optional extra.

Trimdeck®

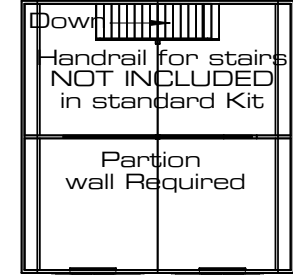


Standard Highlander

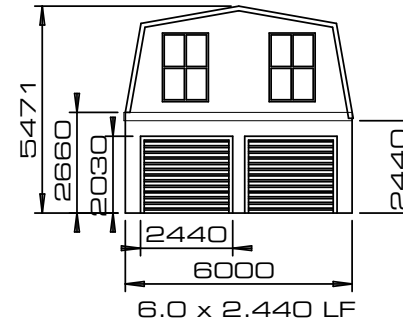
Horizontal  
 Primaplank  
 (Smooth)



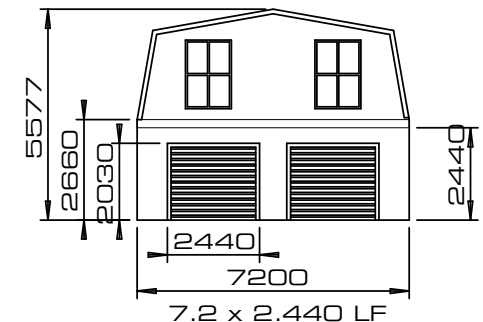
Ground Floor



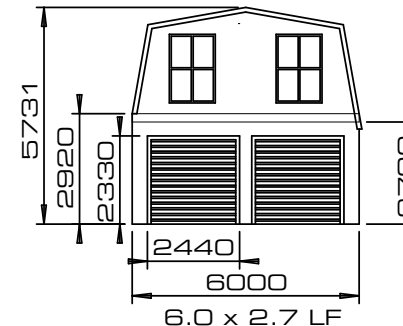
Upper Floor



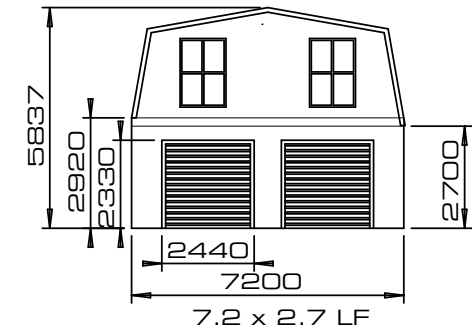
6.0 x 2.440 LF



7.2 x 2.440 LF



6.0 x 2.7 LF



7.2 x 2.7 LF

**"THE HIGHLANDER"**



Residential + Rural Steel Frame Buildings

**HEATHERBRAE**  
 Unit 5 2364  
 Pacific Highway,  
 Heatherbrae 2324  
 Ph. (02) 4983 1922  
 Fax. (02) 4987 4545

**BRANXTON**  
 New England Highway,  
 Branxton 2335  
 Ph. (02) 4938 3088  
 Fax. (02) 49383244

**GOSFORD**  
 4 Luke Close,  
 Gosford West 2250  
 Ph. (02) 4323 4266  
 Fax. (02) 4323 4788

**COFFS HARBOUR**  
 Pacific Highway,  
 Coffs Harbour 2450  
 Ph. (02) 6651 7373  
 Fax. (02) 6651 7858

**LISMORE**  
 94 Bruxner Highway,  
 Lismore 2480  
 Ph. (02) 6622 2540  
 Fax. (02) 6622 1720

**HEAD OFFICE:**

111 Enterprise Drive,  
 Tomago 2322  
 Ph. (02) 4964 8599  
 Fax. (02) 4964 8864  
 Email. allgal@wrsteel.com.au  
 Web. www.allgal.com.au

**"EXTENDED HIGHLANDER"**

**SECIFIC NOTES:**

**ROOF CLADDING**  
 - COLORBOND®  
 - TRIMDECK® ROOF  
 & UPPER MANSARD WALLS

**HORIZONTAL WALL CLADDING.**  
 - PRIMAPLANK - SMOOTH®  
 - N2 (W33) / N3 (W41)

**STUDFRAME WALLS**  
 - 80 Deg Pitch Upper Mansard Walls  
 - 2.440m or 2.700 Lower walls

**INCLUSIONS**

**ROLLER DOORS STANDARD**

Garages with a 2.440m Lower floor High  
 have 2 @ 2.030mh x 2.440mw R/Doors

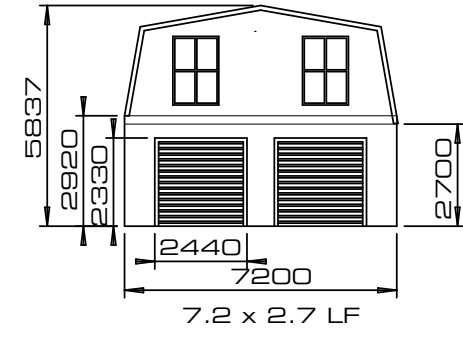
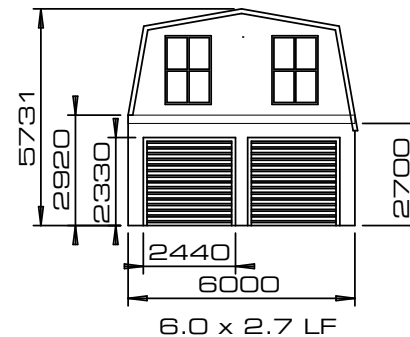
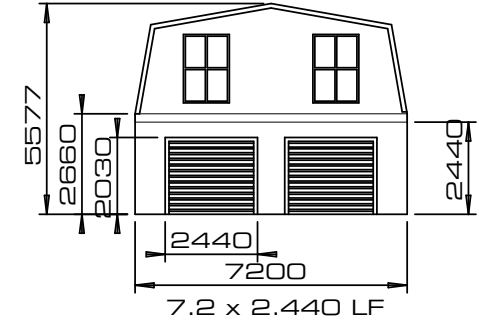
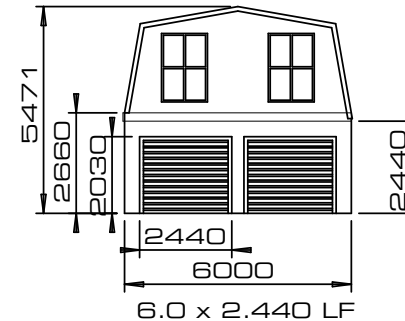
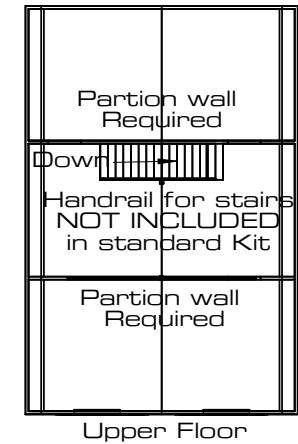
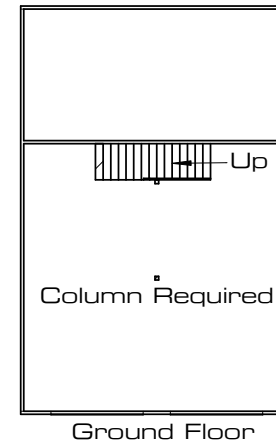
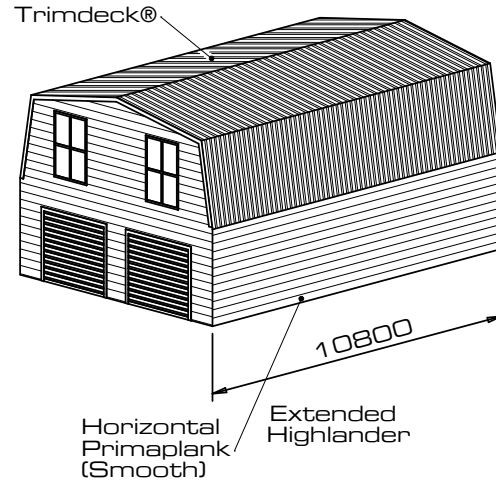
Garages with a 2.700m Lower floor High  
 have 2 @ 2.330mh x 2.440mw R/Doors

**WINDOWS**

All Kits are standard with  
 2 @ 1810h x 1215w Windows

**STAIRS.**

All Kits are standard with  
 a Treated Pine staircase and rail.  
 Handrail for stairs well  
 is NOT INCLUDED.  
 This is an optional extra.



**"THE HIGHLANDER"  
 EXTENDED**