



Residential + Rural Steel Frame Buildings

HEATHERBRAE
 Unit 5 2364
 Pacific Highway,
 Heatherbrae 2324
 Ph. (02) 4983 1922
 Fax. (02) 4987 4545

BRANXTON
 New England Highway,
 Branxton 2335
 Ph. (02) 4938 3088
 Fax. (02) 49383244

GOSFORD
 4 Luke Close,
 Gosford West 2250
 Ph. (02) 4323 4266
 Fax. (02) 4323 4788

COFFS HARBOUR
 Pacific Highway,
 Coffs Harbour 2450
 Ph. (02) 6651 7373
 Fax. (02) 6651 7858

LISMORE
 94 Bruxner Highway,
 Lismore 2480
 Ph. (02) 6622 2540
 Fax. (02) 6622 1720

HEAD OFFICE:

111 Enterprise Drive,
 Tomago 2322
 Ph. (02) 4964 8599
 Fax. (02) 4964 8864
 Email. allgal@wrsteel.com.au
 Web. www.allgal.com.au

"HIGHLINE CURVED ROOF"

SECIFIC NOTES:

ROOF CLADDING

- COLORBOND®
- CUSTOMORB® (Corrugated)

HORIZONTAL WALL CLADDING.

- COLORBOND®
- CUSTOMORB® (Corrugated)
- N2 (W33) / N3 (W41)

STUDFRAME WALLS

- 2.400m High Upper walls
- 2.440m or 2.700 Lower walls
- with 400mm Eaves.
- Curved Barges Included.

INCLUSIONS

ROLLER DOORS STANDARD

Garages with a 2.440m Lower floor Hight have 2 @ 2.030mh x 2.440mw R/Doors

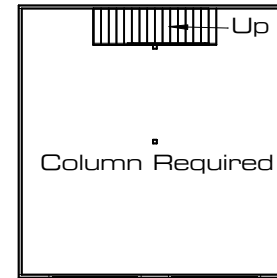
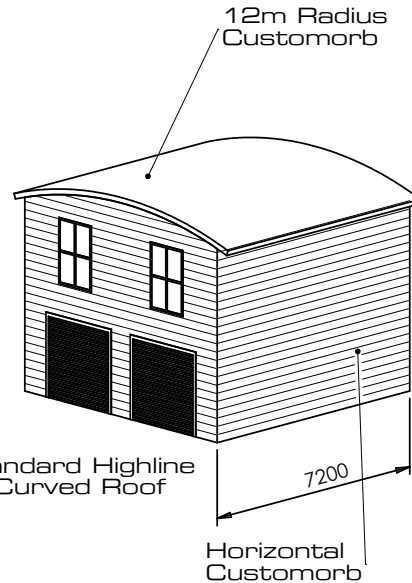
Garages with a 2.700m Lower floor Hight have 2 @ 2.330mh x 2.440mw R/Doors

WINDOWS

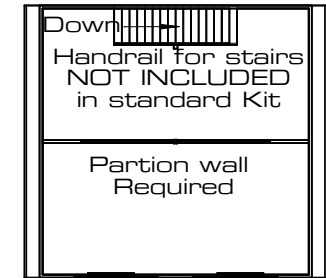
All Kits are standard with 2 @ 1810h x 1215w Windows

STAIRS.

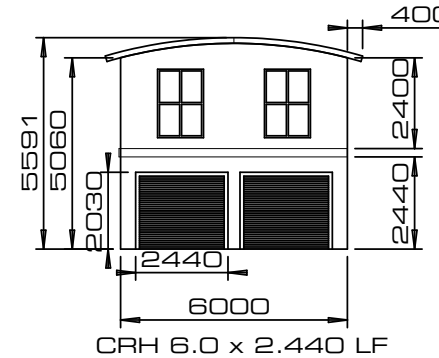
All Kits are standard with a Treated Pine staircase and rail. Handrail for stairs, upper floor opening is NOT INCLUDED. This is an optional extra.



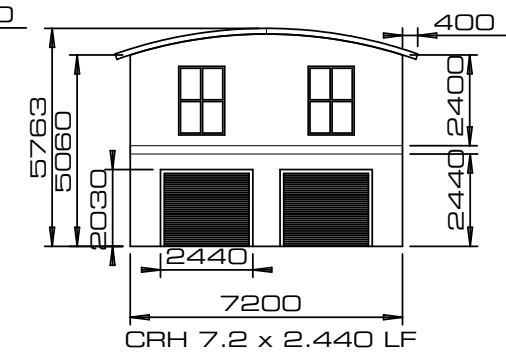
Ground Floor



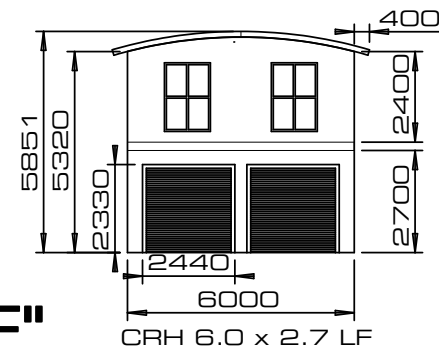
Upper Floor



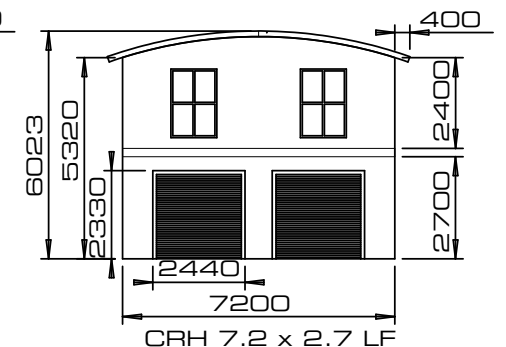
CRH 6.0 x 2.440 LF



CRH 7.2 x 2.440 LF



CRH 6.0 x 2.7 LF



CRH 7.2 x 2.7 LF

"HIGHLINE CURVED ROOF"



Residential + Rural Steel Frame Buildings

HEATHERBRAE
 Unit 5 2364
 Pacific Highway,
 Heatherbrae 2324
 Ph. (02) 4983 1922
 Fax. (02) 4987 4545

BRANXTON
 New England Highway,
 Branxton 2335
 Ph. (02) 4938 3088
 Fax. (02) 49383244

GOSFORD
 4 Luke Close,
 Gosford West 2250
 Ph. (02) 4323 4266
 Fax. (02) 4323 4788

COFFS HARBOUR
 Pacific Highway,
 Coffs Harbour 2450
 Ph. (02) 6651 7373
 Fax. (02) 6651 7858

LISMORE
 94 Bruxner Highway,
 Lismore 2480
 Ph. (02) 6622 2540
 Fax. (02) 6622 1720

HEAD OFFICE:

111 Enterprise Drive,
 Tomago 2322
 Ph. (02) 4964 8599
 Fax. (02) 4964 8864
 Email. allgal@wrsteel.com.au
 Web. www.allgal.com.au

"HIGHLINE CURVED ROOF"

SPECIFIC NOTES:

ROOF CLADDING

- COLORBOND®
- CUSTOMORB® (Corrugated)

HORIZONTAL WALL CLADDING.

- COLORBOND®
- CUSTOMORB® (Corrugated)
- N2 (W33) / N3 (W41)

STUDFRAME WALLS

- 2.400m High Upper walls
- 2.440m or 2.700 Lower walls
- with 400mm Eaves.
- Curved Barges Included.

INCLUSIONS

ROLLER DOORS STANDARD

Garages with a 2.440m Lower floor High
 have 2 @ 2.030mh x 2.440mw R/Doors

Garages with a 2.700m Lower floor High
 have 2 @ 2.330mh x 2.440mw R/Doors

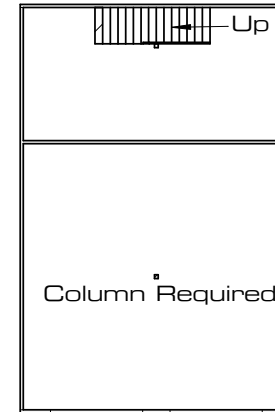
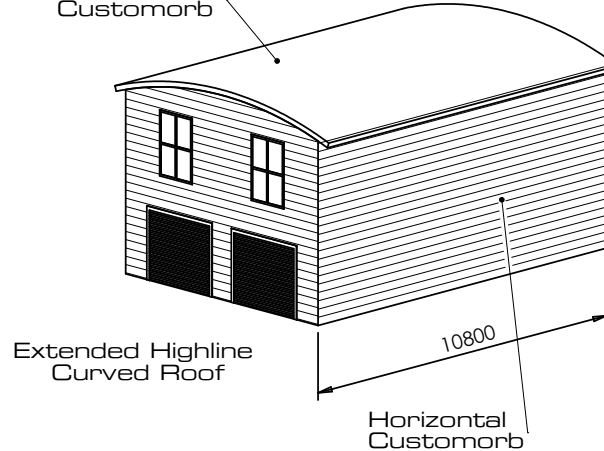
WINDOWS

All Kits are standard with
 2 @ 1810h x 1215w Windows

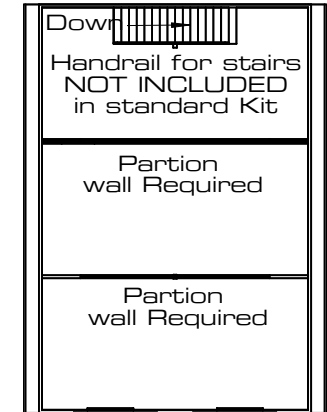
STAIRS.

All Kits are standard with
 a Treated Pine staircase and rail.
 Handrail for stairs, upper floor opening
 is NOT INCLUDED.
 This is an optional extra.

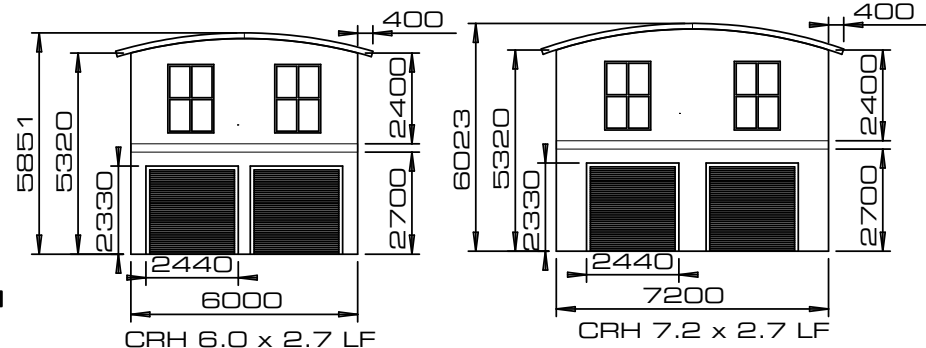
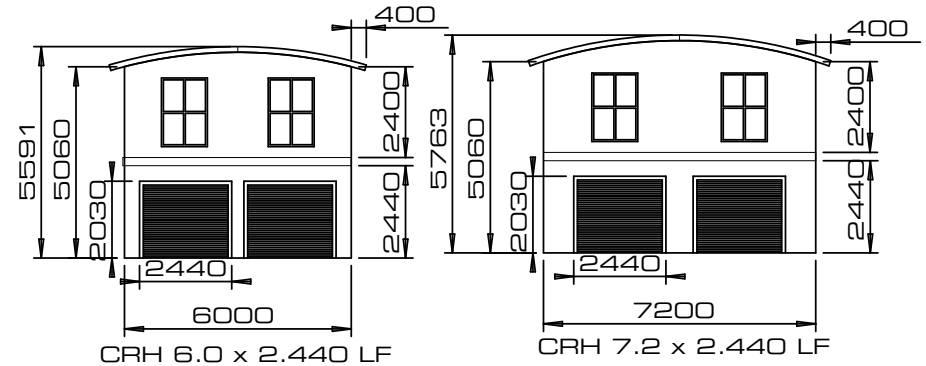
12m Radius
 Customorb



Ground Floor



Upper Floor



"EXTENDED"
"HIGHLINE CURVED ROOF"