



Residential + Rural Steel Frame Buildings

**HEATHERBRAE**  
 Unit 5 2364  
 Pacific Highway,  
 Heatherbrae 2324  
 Ph. (02) 4983 1922  
 Fax. (02) 4987 4545

**BRANXTON**  
 New England Highway,  
 Branxton 2335  
 Ph. (02) 4938 3088  
 Fax. (02) 49383244

**GOSFORD**  
 4 Luke Close,  
 Gosford West 2250  
 Ph. (02) 4323 4266  
 Fax. (02) 4323 4788

**COFFS HARBOUR**  
 Pacific Highway,  
 Coffs Harbour 2450  
 Ph. (02) 6651 7373  
 Fax. (02) 6651 7858

**LISMORE**  
 94 Bruxner Highway,  
 Lismore 2480  
 Ph. (02) 6622 2540  
 Fax. (02) 6622 1720

**HEAD OFFICE:**

111 Enterprise Drive,  
 Tomago 2322  
 Ph. (02) 4964 8599  
 Fax. (02) 4964 8864  
 Email. allgal@wrsteel.com.au  
 Web. www.allgal.com.au

**"HIGHLINE OFFSET CURVED ROOF"**

**SECIFIC NOTES:**

**ROOF CLADDING**

- COLORBOND®
- CUSTOMORB® (Corrugated)

**HORIZONTAL WALL CLADDING.**

- COLORBOND®
- CUSTOMORB® (Corrugated)
- N2 (W33) / N3 (W41)

**STUDFRAME WALLS**

- 3.200m High Upper walls
- 2.440m or 2.700 Lower walls
- with 400mm Eaves.
- Curved Barges Included.

**INCLUSIONS**

**ROLLER DOORS STANDARD**

Garages with a 2.440m Lower floor Hight have 2 @ 2.030mh x 2.440mw R/Doors

Garages with a 2.700m Lower floor Hight have 2 @ 2.330mh x 2.440mw R/Doors

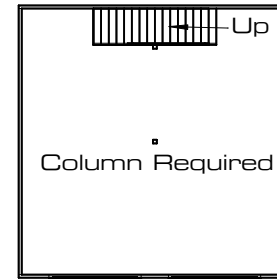
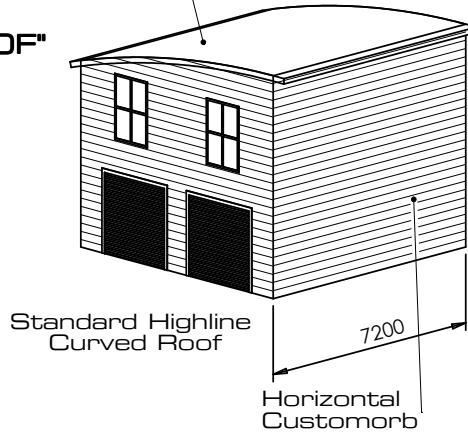
**WINDOWS**

All Kits are standard with 2 @ 1810h x 1215w Windows

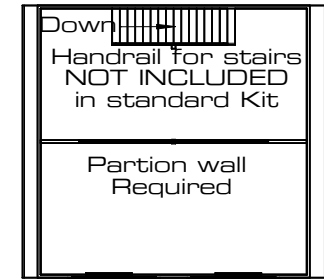
**STAIRS.**

All Kits are standard with a Treated Pine staircase and rail. Handrail for stairs, upper floor opening is NOT INCLUDED. This is an optional extra.

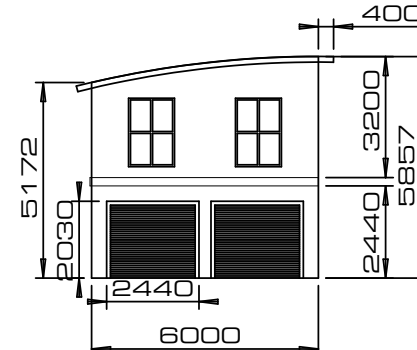
26.5m Radius Customorb



Ground Floor



Upper Floor



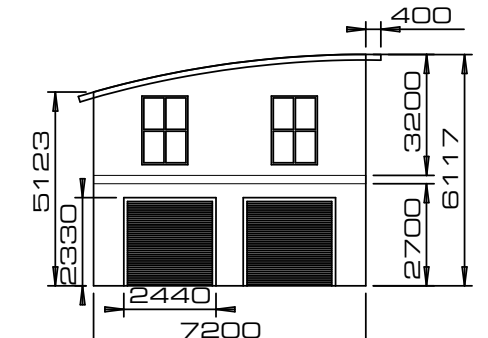
CRH 6.0 x 2.440 LF



CRH 7.2 x 2.440 LF



CRH 6.0 x 2.7 LF



CRH 7.2 x 2.7 LF

**"HIGHLINE OFFSET CURVED ROOF"**



Residential + Rural Steel Frame Buildings

**HEATHERBRAE**  
 Unit 5 2364  
 Pacific Highway,  
 Heatherbrae 2324  
 Ph. (02) 4983 1922  
 Fax. (02) 4987 4545

**BRANXTON**  
 New England Highway,  
 Branxton 2335  
 Ph. (02) 4938 3088  
 Fax. (02) 49383244

**GOSFORD**  
 4 Luke Close,  
 Gosford West 2250  
 Ph. (02) 4323 4266  
 Fax. (02) 4323 4788

**COFFS HARBOUR**  
 Pacific Highway,  
 Coffs Harbour 2450  
 Ph. (02) 6651 7373  
 Fax. (02) 6651 7858

**LISMORE**  
 94 Bruxner Highway,  
 Lismore 2480  
 Ph. (02) 6622 2540  
 Fax. (02) 6622 1720

**HEAD OFFICE:**

111 Enterprise Drive,  
 Tomago 2322  
 Ph. (02) 4964 8599  
 Fax. (02) 4964 8864  
 Email. allgal@wrsteel.com.au  
 Web. www.allgal.com.au

**"HIGHLINE OFFSET CURVED ROOF"**

**SPECIFIC NOTES:**

**ROOF CLADDING**

- COLORBOND®
- CUSTOMORB® (Corrugated)

**HORIZONTAL WALL CLADDING.**

- COLORBOND®
- CUSTOMORB® (Corrugated)
- N2 (W33) / N3 (W41)

**STUDFRAME WALLS**

- 3.200m High Upper walls
- 2.440m or 2.700 Lower walls
- with 400mm Eaves.
- Curved Barges Included.

**INCLUSIONS**

**ROLLER DOORS STANDARD**

Garages with a 2.440m Lower floor Height have 2 @ 2.030mh x 2.440mw R/Doors

Garages with a 2.700m Lower floor Height have 2 @ 2.330mh x 2.440mw R/Doors

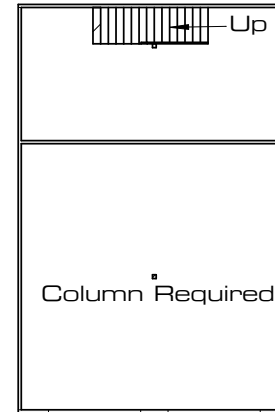
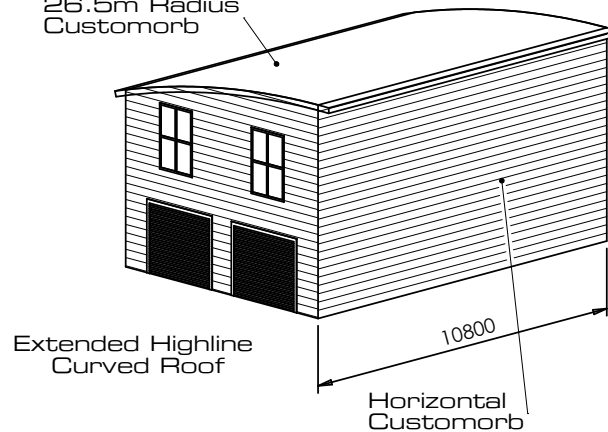
**WINDOWS**

All Kits are standard with 2 @ 1810h x 1215w Windows

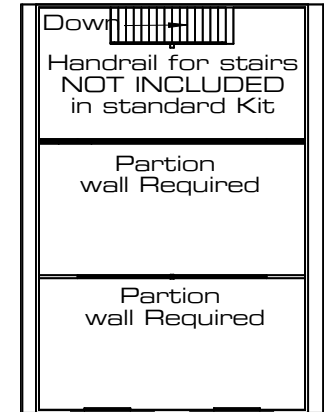
**STAIRS.**

All Kits are standard with a Treated Pine staircase and rail. Handrail for stairs, upper floor opening is NOT INCLUDED. This is an optional extra.

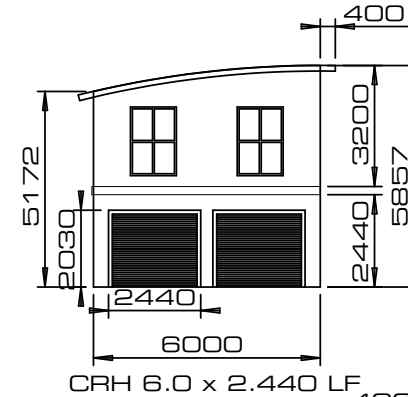
26.5m Radius Customorb



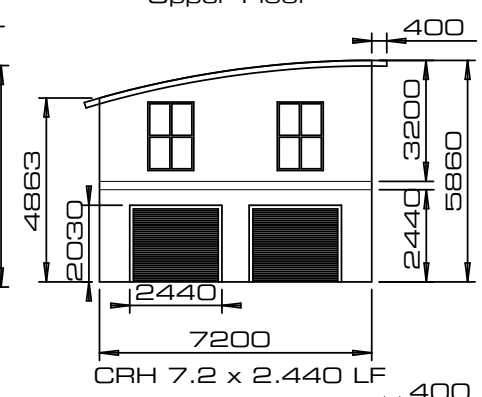
Ground Floor



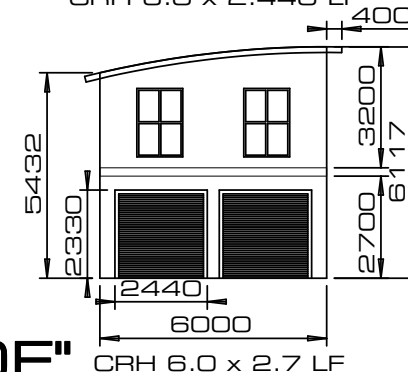
Upper Floor



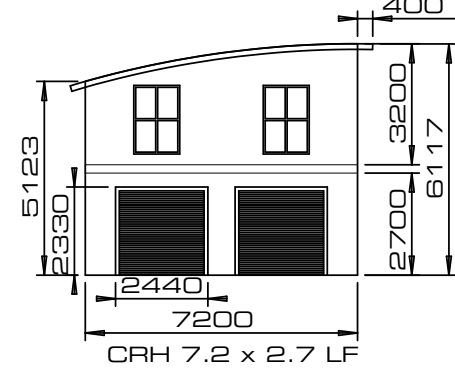
CRH 6.0 x 2.440 LF



CRH 7.2 x 2.440 LF



CRH 6.0 x 2.7 LF



CRH 7.2 x 2.7 LF

**"EXTENDED"**

**"HIGHLINE OFFSET CURVED ROOF"**