



Residential + Rural Steel Frame Buildings

HEATHERBRAE
Unit 5 2364
Pacific Highway,
Heatherbrae 2324
Ph. (02) 4983 1922
Fax. (02) 4987 4545

BRANXTON
New England Highway,
Branxton 2335
Ph. (02) 4938 3088
Fax. (02) 49383244

GOSFORD
4 Luke Close,
Gosford West 2250
Ph. (02) 4323 4266
Fax. (02) 4323 4788

COFFS HARBOUR
Pacific Highway,
Coffs Harbour 2450
Ph. (02) 6651 7373
Fax. (02) 6651 7858

LISMORE
94 Bruxner Highway,
Lismore 2480
Ph. (02) 6622 2540
Fax. (02) 6622 1720

HEAD OFFICE:

111 Enterprise Drive,
Tomago 2322
Ph. (02) 4964 8599
Fax. (02) 4964 8864
Email. allgal@wrsteel.com.au
Web. www.allgal.com.au

"GABLE GARAGES"

SPECIFIC NOTES:

ROOF CLADDING - COLORBOND® & ZINCALUME®
ROOF CLADDING - TRIMDECK®
ROOF CLADDING - CUSTOMORB® (Corrugated)

WALL CLADDING - COLORBOND® & ZINCALUME®

OPTION 1. VERTICAL CLADDING.
WALL CLADDING - TRIMWALL® - N2 (W33)
WALL CLADDING - TRIMDECK® - N3 (W41)

OPTION 2. VERTICAL CLADDING. (Corrugated)
WALL CLADDING - CUSTOMORB® - N2 (W33)
WALL CLADDING - CUSTOMORB® - N3 (W41)

OPTION 3. HORIZONTAL CLADDING.
WALL CLADDING - EASYCLAD® - N2 (W33) / N3 (W41)

OPTION 4. HORIZONTAL CLADDING. (Cement Fibre Board)
(STUDFRAME WALLS)
WALL CLADDING - 230 SMOOTH - N2 (W33) / N3 (W41)
WALL CLADDING - HARDIES RUSTICATED® - N2 (W33) / N3 (W41)
COLUMNS = C20015, C15015
RAFTERS = C20015, C15015

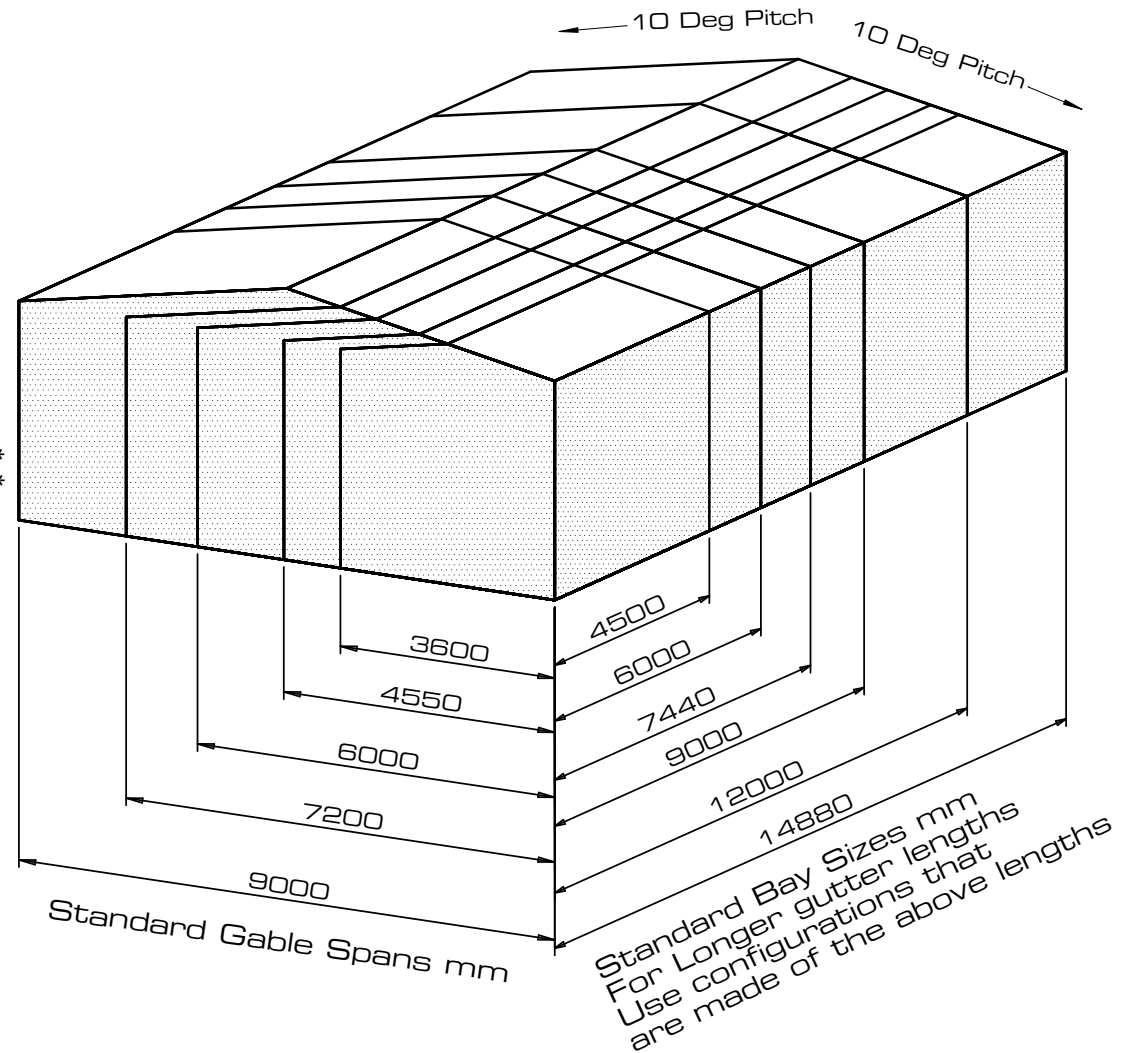
INCLUSIONS
ROLLER DOORS STANDARD @ 2.440w
(1 in 3.6 & 4.55 spans 2 in 6.0, 7.2 & 9.0 span)

*3.600m & 4.200m EAVES
(Spans 7.2m & over include 2 / 2.7w roller doors as standard.
2 x 2.7m wide roller doors fit in a 6.0m bay
-but not in a 6.0m gable end)

WINDOW
(1 Window 900h x 1200w is included)

SOIL ASSUMED 'M' CLASS
SLAB PRICES ARE BASED ON A LEVEL SITE.
THERE IS NO FILL INCLUDED IN PRICES QUOTED.

- Standard Heights
- 2400 mm
 - 2700 mm
 - 3000 mm
 - 3300 mm
 - 3600 mm *
 - 4200 mm *



"GABLE GARAGES"