



Residential + Rural Steel Frame Buildings

**HEATHERBRAE**  
Unit 5 2364  
Pacific Highway,  
Heatherbrae 2324  
Ph. (02) 4983 1922  
Fax. (02) 4987 4545

**BRANXTON**  
New England Highway,  
Branxton 2335  
Ph. (02) 4938 3088  
Fax. (02) 49383244

**GOSFORD**  
4 Luke Close,  
Gosford West 2250  
Ph. (02) 4323 4266  
Fax. (02) 4323 4788

**COFFS HARBOUR**  
Pacific Highway,  
Coffs Harbour 2450  
Ph. (02) 6651 7373  
Fax. (02) 6651 7858

**LISMORE**  
94 Bruxner Highway,  
Lismore 2480  
Ph. (02) 6622 2540  
Fax. (02) 6622 1720

**HEAD OFFICE:**

111 Enterprise Drive,  
Tomago 2322  
Ph. (02) 4964 8599  
Fax. (02) 4964 8864  
Email. allgal@wrsteel.com.au  
Web. www.allgal.com.au

**"THE RETREAT"**

**SECIFIC NOTES:**

**ROOF CLADDING**

- COLORBOND®
- TRIMDECK®, CUSTOMORB® (CORRO)

**HORIZONTAL WALL CLADDING.**

- PRIMAPLANK - SMOOTH®
- N2 (W33) / N3 (W41)
- COLORBOND®

**VERTICAL WALL CLADDING.**

- CUSTOMORB® (CORRO)
- N2 (W33) / N3 (W41)

**STUDFRAME WALLS**

- 2.440m Lower walls

**INCLUSIONS**

**ROLLER DOORS STANDARD**

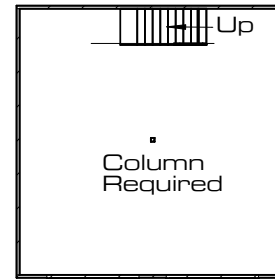
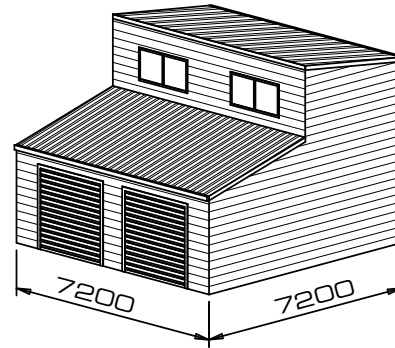
2 @ 2.330mh x 2.440mw R/Doors

**WINDOWS**

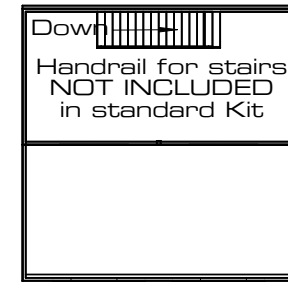
All Kits are standard with  
2 @ 910h x 1815w Windows

**STAIRS.**

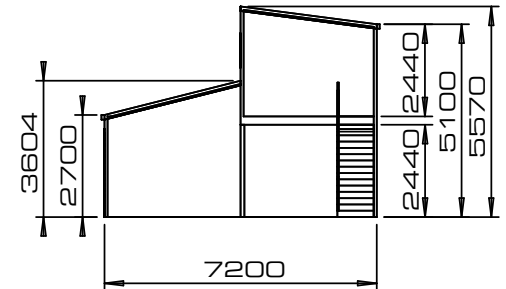
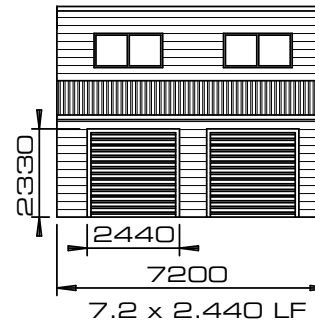
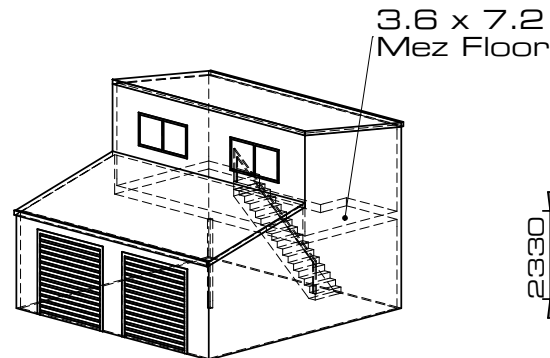
All Kits are standard with  
a Treated Pine staircase and rail.  
Handrail for stairs well  
is NOT INCLUDED.  
This is an optional extra.



Ground Floor



Upper Floor



**"THE RETREAT"**



Residential + Rural Steel Frame Buildings

**HEATHERBRAE**

Unit 5 2364  
Pacific Highway,  
Heatherbrae 2324  
Ph. (02) 4983 1922  
Fax. (02) 4987 4545

**BRANXTON**

New England Highway,  
Branxton 2335  
Ph. (02) 4938 3088  
Fax. (02) 49383244

**GOSFORD**

4 Luke Close,  
Gosford West 2250  
Ph. (02) 4323 4266  
Fax. (02) 4323 4788

**COFFS HARBOUR**

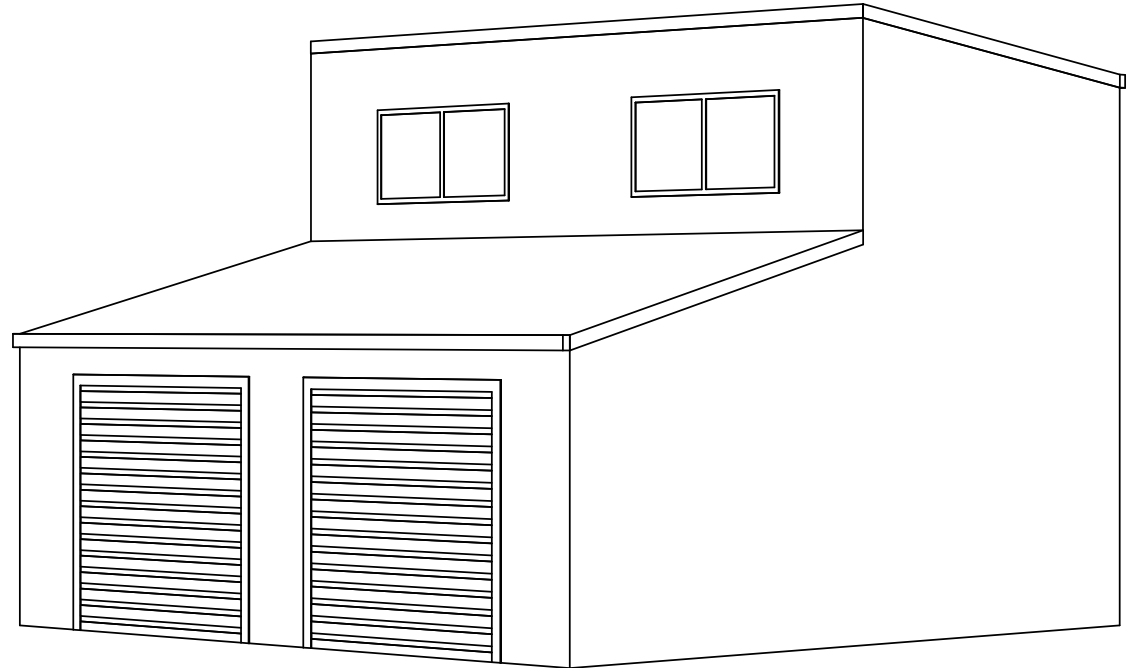
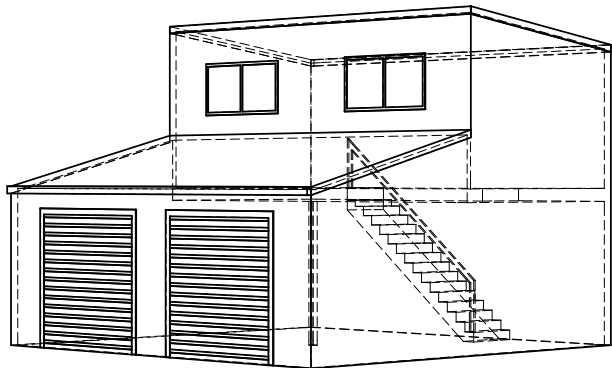
Pacific Highway,  
Coffs Harbour 2450  
Ph. (02) 6651 7373  
Fax. (02) 6651 7858

**LISMORE**

94 Bruxner Highway,  
Lismore 2480  
Ph. (02) 6622 2540  
Fax. (02) 6622 1720

**HEAD OFFICE:**

111 Enterprise Drive,  
Tomago 2322  
Ph. (02) 4964 8599  
Fax. (02) 4964 8864  
Email. [allgal@wrsteel.com.au](mailto:allgal@wrsteel.com.au)  
Web. [www.allgal.com.au](http://www.allgal.com.au)



**"THE RETREAT"**